



Regina Coeli

Child Development Center

Head Start and Early Head Start



ANNUAL REPORT

2021-2022



Since 1969, Regina Coeli Child Development Center has impacted the lives of thousands of children and their families in Southeast Louisiana. Head Start provides education, health, nutrition, social and special needs services to low income and at-risk families. The program is funded to provide early childhood services to over 1600 children and pregnant women and employs over 500 people in a five-parish area.



MISSION STATEMENT

The mission of Regina Coeli is to provide the highest quality of service to children and families through a community team effort based on the question:
“Is it good for children?”



RCCDC was named one of the Safest employers in 2021-2022 by Louisiana Workers' Compensation Corporation

2020-2021 Board of Directors

Hildra Martin, **President**
Sandra Towle, **Vice-President**
Stephanie Miller, **Secretary**
Kimberly Showers, **Treasurer**
Denitra Carter, **Board Liaison**
Kim Finch
Colleen Klein-Ezell
Dr. Carol Torrey Ph.D
Constance Dyson Ed.D.
Anna Greenwood -Garrett
Carla Gongre
Kimberly Fultz
Major Coleman
Sean Williams
Heather Gagliano
Robin Hutchinson

2020-2021 Policy Council

Alfredia Dillon	Kayla Corporal
Briannah Quinn	Laterica McGee
Carolyn Roman	Temicka Scott
Cindy Dykes	Anthony Herrera
Cindy Wright	Cree Rogers
Denitra Carter	Allison Nelson
Nicol Thomas	
Khristie Landrew	
Chelsey Hunt	
Sharonda Taylor	
Nieka Wright	
Crystal King	
Misty Spellman	
Ashley Clark	
Katrular Buchanan	
Ayana Buchanan	
Daniella Howard	
Andrietta Carr	
Sierra Henderson	

RCCDC Management

Executive Director:
Josalyn Robinson PhD

Program Directors:
Charlotte Landry
Dawn Williams PhD
Ola Magee

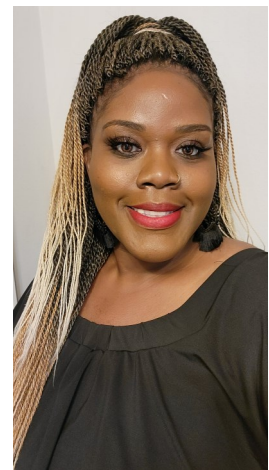
Financial Controller:
Philip Morris

Human Resources
Sandra Flad SHRM-CP-
PHR

Facilities & Maintenance
Manager:
Renginal Knox

A Message from the Executive Director

2021-2022 Regina Coeli experienced a change in leadership for the first time in fourteen years. 2021-2022 presented its challenges. Covid continued to run rampant throughout our centers requiring us to provide remote services to families. Parent meetings, workshops, and staffings were conducted via Zoom. We missed the comradery that comes with gathering together for our annual pre-service. In the midst of struggling to fill employment vacancies, the vaccine mandate further hindered our ability to attract employees. Let us not forget that we endured Category 4 Hurricane Ida that left our communities ravished. Our centers were closed for weeks. Our communities were without power, water, and other daily essentials. In the midst of all the chaos, we opened Shirley Cross Head Start in Kentwood, LA! Regina Coeli continues to be a pillar in the community, providing high quality services to children and families.



2021-2022 Enrollment

Head Start (3-5 years)

Early Head Start (6wks-3 years)

Pregnant Women's Program

	Head Start	Early Head Start	Pregnant Women
Number of children served	1005	391	28



**Total Number of
Children Served:
1,396**



Education & Special Needs Services

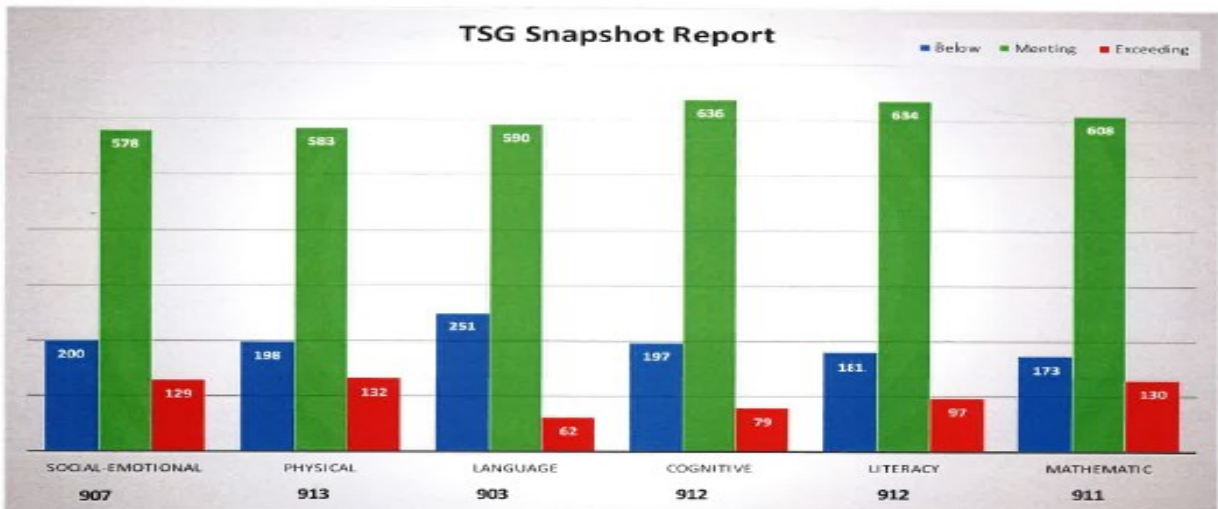
Our teachers use a developmentally appropriate curriculum designed to improve emergent literacy, numeracy, language, general cognitive and motor skills in a positive learning environment. Children are prepared for kindergarten through classroom activities, parent meetings with school representatives, and periodic assessments to set goals and prepare the individual child for the next school setting.

RCCDC Head Start teachers use Creative Curriculum, a comprehensive, research-based curriculum designed to address the needs of the whole child. Children are active learners participating in direct, hands-on experiences with people, objects, events, and ideas. Children make choices, plans and decisions in the learning process. Adults expand children's critical thinking skills through supportive teaching strategies. Teachers send home activities for parent engagement and preparation for school.

Head Start and Early Head Start teachers use the Teaching Strategies Assessment to measure the child's ability in the beginning of the year, and the child's progress on a variety of skills. The results are shared with parents and used to determine appropriate learning activities and goals for each child throughout the year. The child's progress is tracked by comparing the final assessment to the earlier assessments and all are share with the child's parent.



REGINA COELI 2021-2022 SPRING ASSESSMENT REPORT



The chart above is our assessment results. Each column show the number of children with a checkpoint for the spring rating in each of the Learning Domains. Numbers in bold represent the total number of children in each Domain with a checkpoint.

Disabilities: Teachers work with children who have identified special needs just as they work with typical children to accommodate the needs of the child in order to provide a successful learning environment. Over **10%** of the enrolled children had disabilities with **7%** of those being significant disabilities.

Health Services

In spite of the difficult year Head Start and Early Head Start continued to work with children and parents to screen children for any health concerns and ensure parents were able to obtain the necessary follow up care

PHYSICALS

Head Start:	99%
Early Head Start:	93%
Pregnant Women:	82%

DENTALS

Head Start:	97%
Early Head Start:	91%
Pregnant Women:	39%

Nutrition

Providing food and nutritional meals for children has always been a high point of the Head Start program. The focus is to provide healthy food options in a family-style meal setting. We also provide families with nutrition education.

Mental Health

Mental Health services were continued to be critical during the 2021-2021 program year. Head Start staff worked with children and families to identify sources of stress and to provide resources or access to counselors, as needed. RCCDC also prioritized staff wellness by offering wellness resources, activities, and incentives to the staff.

Parent Engagement Activities

Access to education, training, and support services is just as important for parents and other family members as it is for children. Over the past year, parents supported the program through involvement at the program level through the Policy Council, School Readiness Committee, the Nutrition Advisory Committee, and the Health Services Advisory Committee. The use of Zoom has proven to increase parental participation.

- Community Network Events
- Fall Festivals
- Head Start Awareness Activities
- Cultural Awareness Activities
- Male Involvement Activities
- Grandparents Day
- Monthly Parent Committee Meetings
- Monthly Parent Workshops
- Literacy Festivals



Funding & Budget

Office of Head Start Federal Funding

	HEAD START	EARLY HEAD START	T & TA HEAD START	T & TA EARLY HEAD START	Covid-19 One-Time CRRSA & ARP	Nonfederal	TOTAL BUDGET
Award Amount 2021-2022	11,767,317	3,855,976	130,495	83,340	2,506,764	3,959,282	22,303,174

Non-Federal Funding Match Required	\$ 4,307,902.00
Generated	\$ 66,948.18

Regina Coeli Child Development Center receives grants from the Administration for Children and Families of 80% required to operate the program. The remaining 20% is generated through the donation of time, services, goods, and funds from the community. As a result of Covid, RCCDC was not able to meet the non-federal match. The Office of Head Start granted fiscal flexibility which allowed RCCDC to receive a waiver for the unmet portion.

Budget 2021-2022

Operating Budget Category	Budget
Personnel	10,627,159
Fringe Benefits	1,976,105
Occupancy	993,847
Child Travel	119,347
Insurance-Commercial	222,416
Supplies	447,443
Other Costs	270,179
Staff Travel	125,411
Child Services	45,016
Parent Services	51,406
Training and TA	213,835
Food costs transfers	458,309
One time funds	286,627
TOTAL	\$15,837,128

Audit Opinion

The final opinion from Poslethwaite & Neterville, A Professional Accounting Corporation states that Regina Coeli Child Development Center has complied, in all material respects, with the compliance requirements as listed by the uniform guidance that could have a direct and material effect on the major federal program for the year ended May 31, 2021.